

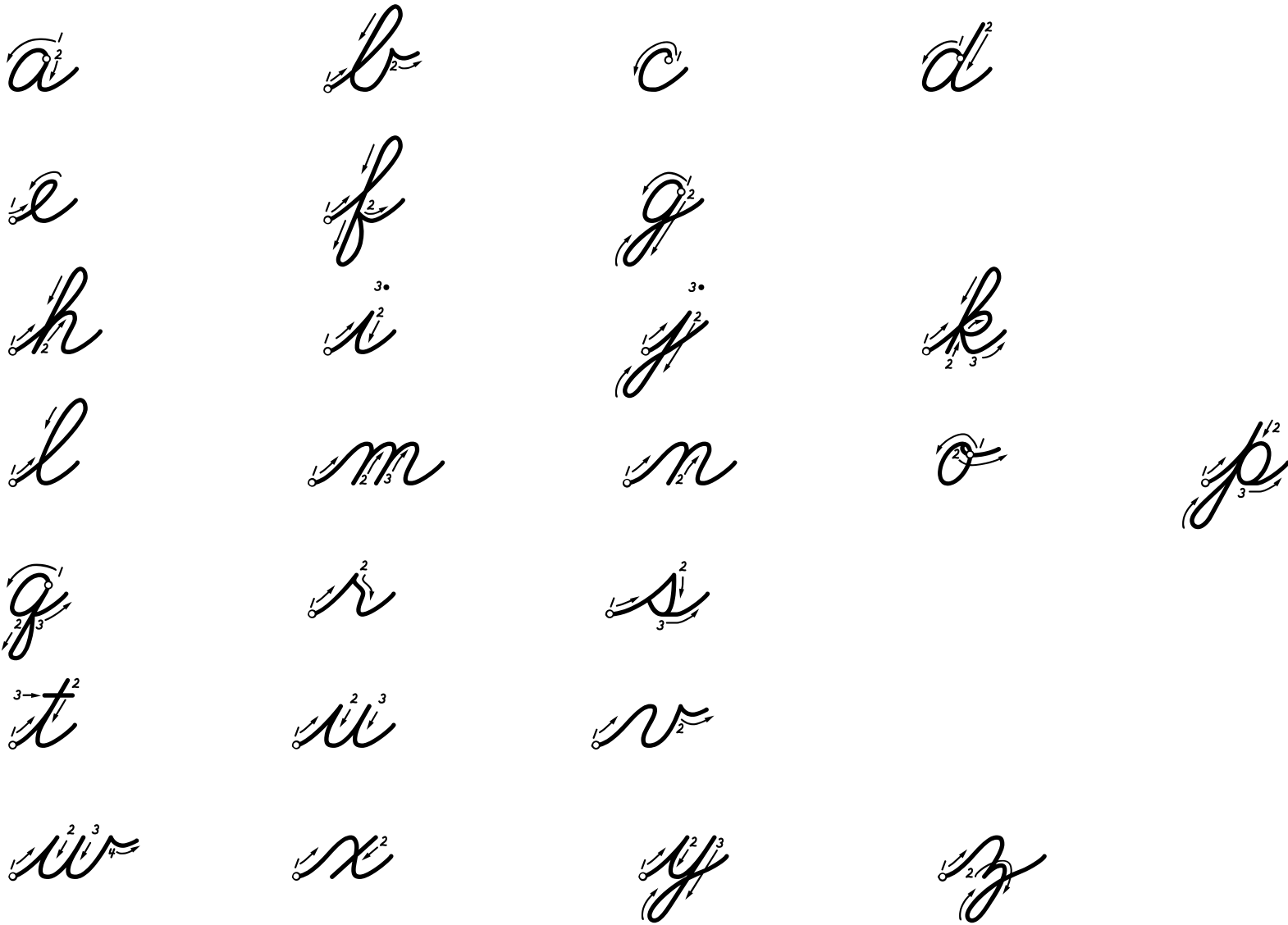
Fundamentals of Cursive Handwriting

By Donald L. Potter

October 29, 2017

www.donpotter.net

LOWERCASE CURSIVE ALPHABET PRACTICE



UPPERCASE CURSIVE ALPHABET PRACTICE

A

B

C

D

E

F

G

H

I

J

K

L

M

N

O

P

Q

R

S

T

U

V

W

X

Y

Z

Downcurve

a c d g o q

aa cc dd gg oo qq

Overcurve

m n v x z

Undercurve

b e f h i j k l p

r s t u w y

Midline Joining Strokes

ba be bi bo bu bl br bs
bt bc oa oe oi ow oy ob
oc od of og oh oj ok ol om
on oo op or os ot ov ox
oy wa we wi wo wh wr
ws wn va ve vi vo vu
vy

Below Line Joining Strokes

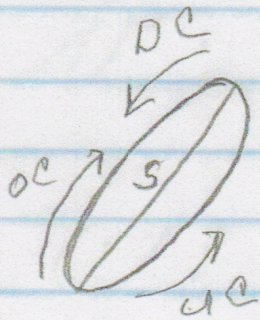
ja je jü jo ju ga ge gi go
gu gl gr gs gg gh ya yi ye
yo yu ys yl yr za ze zi
zo zu zy zz

UPPERCASE JOINING STROKES

Am Al Ag Ba Be Bi Bo Br Bl
Ca Ce Ci D Ea Ei Ev El F
Ga Ge Gi Gy Ha He Hi Ho Hu I
Ja Je Ji Ka Ke Ki La Le Li
Ma Me Mi Na Ni Ne O P Qu
Ra Re Ri Sa Se Si Ta Te Ti Tr
Th Us Un V W Xe Xy Ya Ye Yi

Shortcut to Cursive
Written and Copyright by
Donald L. Potter 5/27/2013, 10/4/2017

Oval Terminology: Language of Movement



Strokes

Under-Curve ↗ UC

Down-Curve ↓ DC

Over-Curve ↖ OC

Slant ↓ S

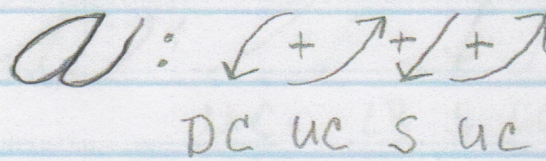
Connect-Stroke ~ CS

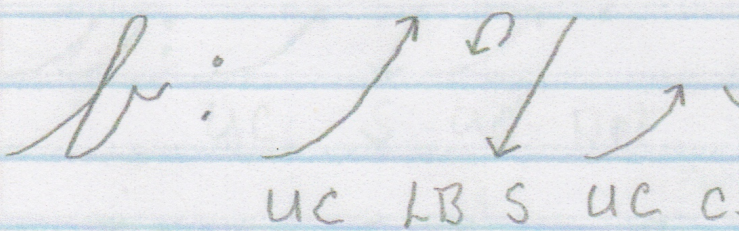
Loop Back ↻ LB

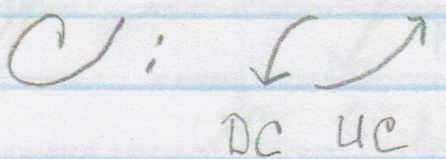
Loop Forward GLF

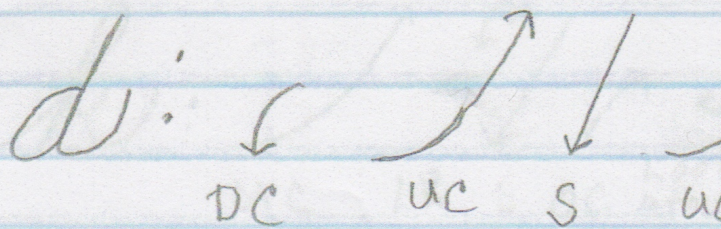
Hook ~ H

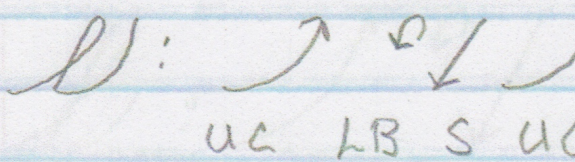
Breakdown of Lowercase Strokes

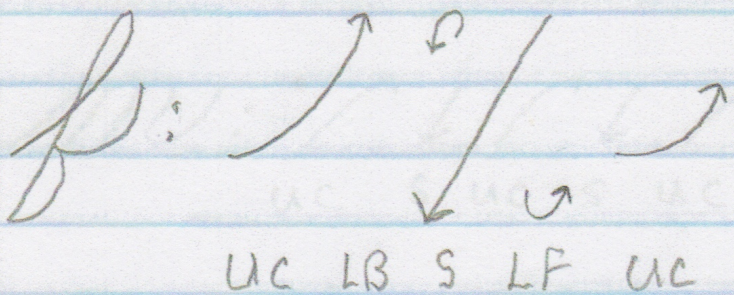
a:  = a a a
DC UC S UC Hook

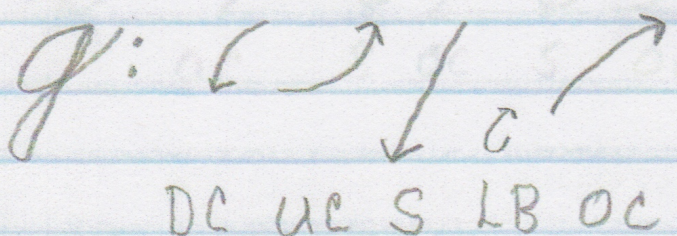
b:  = b b b
UC LB S UC CS H

c:  = c c c
DC UC Hook

d:  = d d d
DC UC S UC Hook

e:  = e
UC LB S UC

f:  = f
UC LB S LF UC

g:  = g g g
DC UC S LB OC Hook H

h: = h

i: = i

j: = j

k: = k

l: = l

m: = m

n: = n

o: $\downarrow \nearrow \cup = o \quad o \quad o \quad o \quad o$
DC UC CS H

p: $\nearrow \downarrow \circ \nearrow \curvearrowright \nearrow = p$
UC S LB OC curve Amount UC

q: $\downarrow \nearrow \downarrow \cup \nearrow = q \quad q \quad q \quad q$
DC UC S LF OC H

r: $\nearrow \searrow \downarrow \nearrow = r \quad r \quad r$
UC S-Right S UC

s: $\nearrow \curvearrowleft \nearrow = s \quad s \quad s$
UC curve down UC

t: $\nearrow \downarrow \nearrow \rightarrow = t \quad o \quad t$
UC S UC cross

u: $\nearrow \downarrow \nearrow \downarrow \nearrow = u$
UC S UC S UC

v: $\nearrow \downarrow \nearrow \cup = v$
OC S UC CS

W: ↗ ↓ ↗ ↓ ∪ = W
UC S UC S CS

K: ↗ ↓ ↗ ↓ = K
OC S UC Slant

Y: ↗ ↓ ↗ ↓ ↗ = Y
UC S UC S LB OC

g: ↗ ↓ ↗ ↘ ↗ = g
OC S OC S LB OC

Alternative Strokes

a k d g o g y

Alphabet String for Daily Fluency Practice

abcdefghijklmnopqrstuwxvz